



Tug Hill Indicators

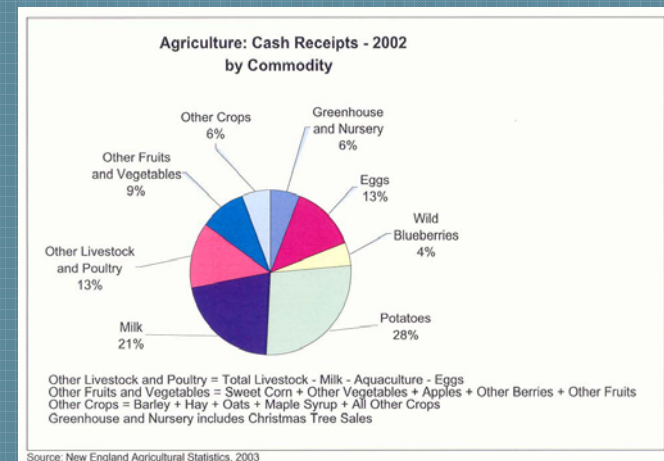
Why Indicators?

- More information is available digitally than in previous years – 2004 CTHC Resource Inventory, Black River projects (asset mgmt., blueway trail, sewer/water projects, etc.), Route 3 sewer project, Salmon River Watershed Natural Resource Inventory, others)
- Investments in new GIS technology allowing live, on-line GIS information for local officials
- Potential to provide improved service to communities for better-informed decision-making






What is an Indicator?

- **Ongoing**, consistent measurement
- **Quantifiable**
- **Illustrates a trend** over time
- **Incorporated** into active community planning processes

- *NOT a one-time portrait or snapshot, such as in an atlas or inventory*



Indicators of Maine's Natural Resource-based Industry at a Glance

sector	issue	indicator	trend	page
cross-sector 	our economy	1. Output as a Portion of Gross State Product	-	12
	our natural resource	2. Number of Communities Designated Urban	-	14
	our communities	3. Full- and Part-time Employment	+	16
agriculture 	our economy	4. Net Farm Income	-	20
	our natural resource	5. Acres of Productive Cropland	-	23
	our communities	6. Number of Farmers' Markets	+	25
fisheries & aquaculture 	our economy	7. Value of Fishing Landings	+	30
	our natural resource	8. Biomass of Lobsters	0	35
	our communities	9. Working Waterfront Property Values	-	39
forest products 	our economy	10. Capital Investment in Paper Mills	0	42
	our natural resource	11. Cords of Merchantable Timber	+	46
tourism/ recreation 	our economy	12. Number of Overnight Marketable Trips	+	56

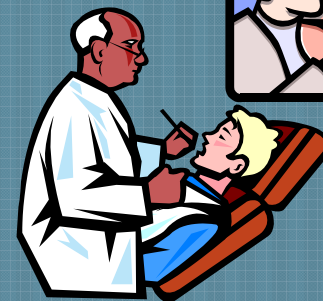
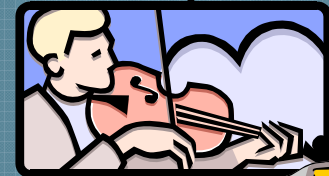
note: plus sign indicates positive trend; minus sign indicates negative trend;
zero indicates no discernible trend

The Most Effective Indicators

- **Relevant** –relate to specific community goals, strategies, and/or quality of life issues; have concrete meaning to you and to community members
- **Easy to understand**
- **Reliable** – the information is trustworthy and collected consistently over time
- **Based on accessible data** - the information is available or can be gathered in a timely fashion, will be available for the foreseeable future, and there is time to take meaningful action

Indicator Categories

- Land Use
- Economic Infrastructure
- Built Infrastructure
- Nature/Green Infrastructure
- Social Vitality
- Health and Safety
- Education



Land Use

Indicator Examples

- Tax parcels by property class
- Acreage by property class
- Net annual change in number of tax parcels (subdivision activity)
- Acreage of &/or number of parcels that are tax exempt
- Acres of protected open space as a percentage of the total
- Acres of intact forest, agricultural, industrial, etc. land as a percentage of the total

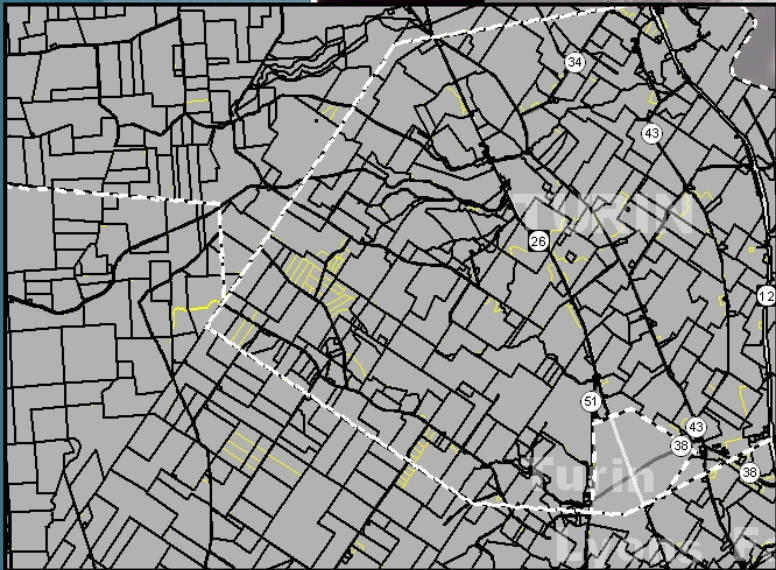


SUBDIVISION

RESOURCE INVENTORY

Legend

- Parcel (not color)
- Parcel (color - 200)
- Road Classification
 - Interstate
 - State Road
 - County Road



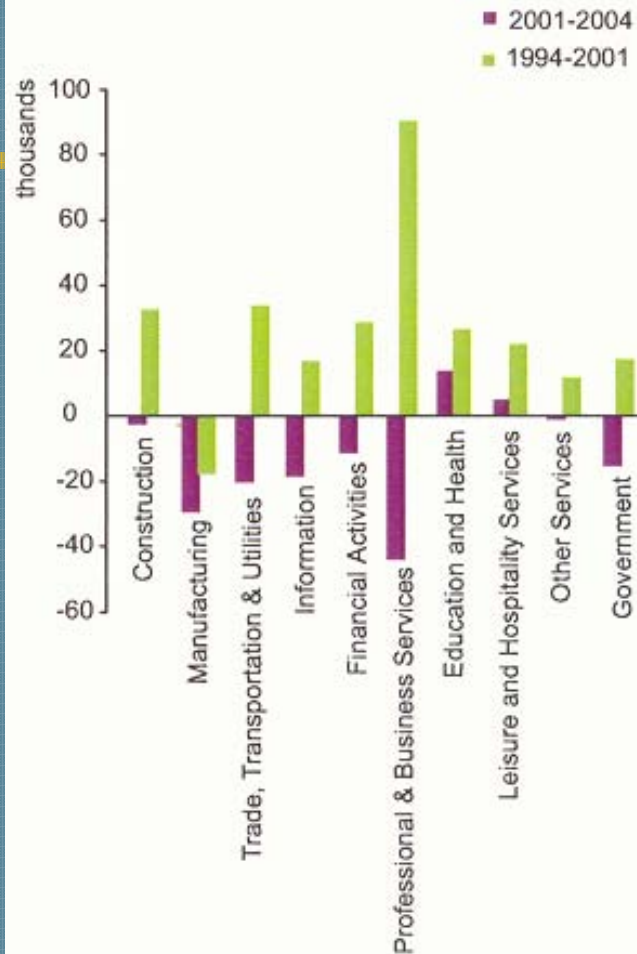
Economic Infrastructure

Indicator Examples

- Number of jobs per industry (forest products, agriculture, recreation, tourism, retail, etc.)
- Earned wages per industry
- Number and range in amount of deposits in local banks
- Percentage of resident population at or below poverty level
- Total food stamp payments
- Number of proprietors in the workplace

Payroll Employment by Industry Net Change, 1994 - 2004

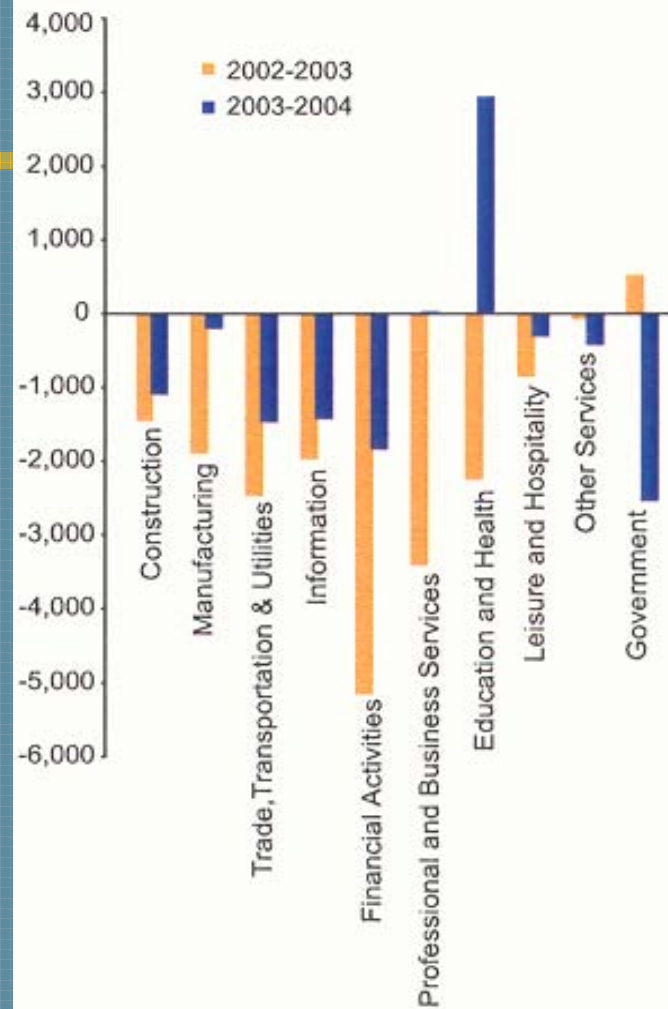
Metro Boston



Source: U.S. Bureau of Labor Statistics, State and Area Employment. Data for Boston CMSA.

Payroll Employment by Industry Net Change, 2002-2004

City of Boston



Source: Massachusetts Department of Unemployment, ES-202 Data for second quarter of each year.

Built Infrastructure

Indicator Examples

- Major highway traffic counts
- Miles of paved road, miles of unpaved road
- Miles of recreation trails by type
- Total housing units, units by type
- Age of housing
- Annual expenditures for continued maintenance of municipal water and/or sewer system
- No. of developable units on water and/or sewer system
- Number of buildings on state/federal historic register
- Internet/cell phone service coverage and cost



Great Bend, NY

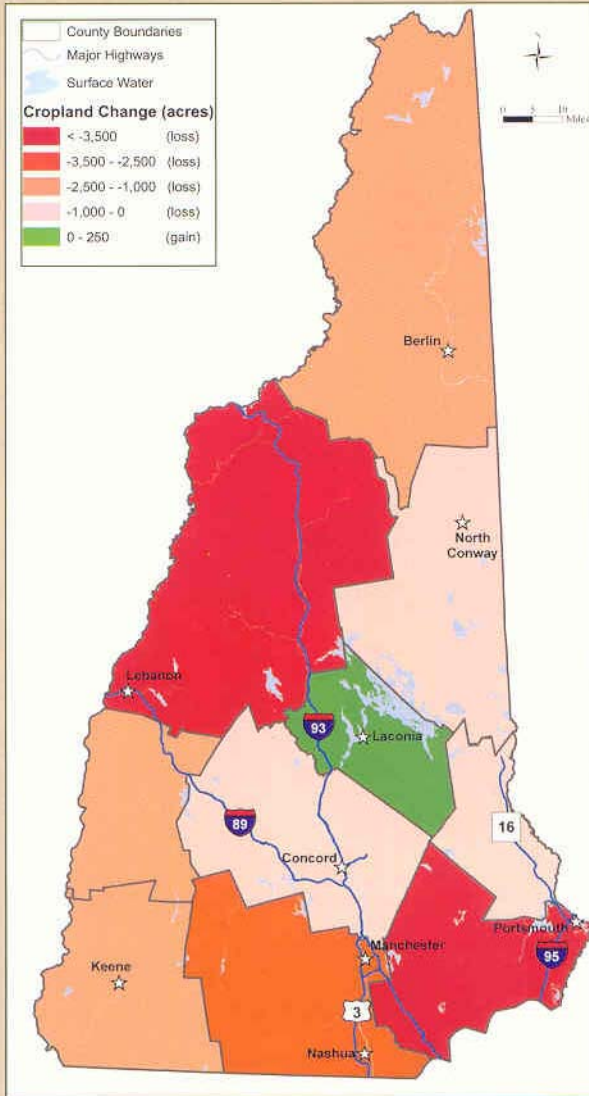


Green Infrastructure

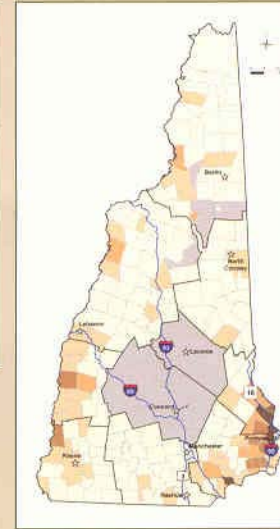
Indicator Examples

- Miles or number of impaired rivers (DEC)
- Water classifications of all major rivers and streams (DEC)
- Acres of permanently protected open space as a percentage of the total
- Acres in active agriculture
- Acres in actively managed forest
- Acres of recreation lands
- Average pH of precipitation
- Number of “good” air quality days
- Abundance and diversity of fisheries
- Lbs. of waste recycled per capita

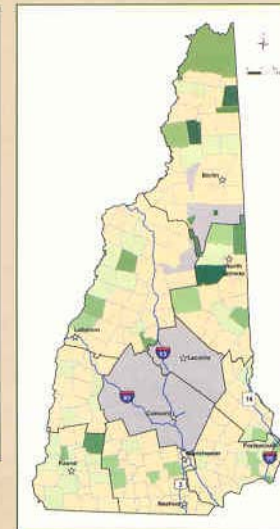
CROPLAND CHANGE, 1997-2002



IMPORTANT AGRICULTURAL SOILS



PROTECTION STATUS



- Farm and cropland statistics provided by the National Agricultural Statistics Service, 2002 *Census of Agriculture, N.H. State and County Data, Vol 1, Part 29.*
- Soils statistics generated from National Resource Conservation Service county soils map data (provided by GRANIT).

Social Vitality

Indicator Examples



- Percent of registered voters who cast votes in local elections
- Number and health of community foundation(s)
- Percent of towns with public libraries
- Number, attendance at fairs, festivals, community events

Health and Safety

Indicator Examples



- Number of preventable deaths
- Rate of Property & Violent Crime
- Average emergency response times
- Number of general hospitals and/or specialty clinics within a certain radius of a community

Education

Indicator Examples



- Number of high school diplomas granted
- Enrollment in high school vocational courses
- High school seniors planning to pursue further education
- Preprimary school enrollment
- Age/condition of school buildings
- Number of continuing education offerings within a certain radius

Indicator Models

- Northern Forest Wealth Index
- Society for the Protection of New Hampshire Forest's Changing Landscape Project
- Cape Cod Sustainability Indicators
- Sustainable Measures
- Great Lakes Regional Collaboration
- Chesapeake Bay, Susquehanna River, Delaware River watersheds
- Many, many others!

Putting Indicators to Use

- Basic measures that could be used to monitor community/regional trends:

Economic Infrastructure

- Employment by occupation (diversity of economy, strength of sectors)
- Residents employed within town boundary (local \$ activity)
- Municipal expenditure categories (essential services met)

Built Infrastructure

- Number of households
- Available amount & types of housing

Land Use

- * Net change in number of tax parcels (subdivision activity)
- * Tax parcels by property class (shifts in tax burdens)

Green Infrastructure

- Miles of fishable and swimmable rivers and streams
- Land cover (shifts in land use & vegetative diversity)

Social Vitality

- * Age distribution of population
- * Types of households

Putting Indicators to Use

■ Local Outreach & Feedback

COGs, Town boards, planning boards –

- Review what we can provide and let us know if it is something you feel you would make use of
- Tell us if you wish the Commission to devote its resources, and seek additional resources for, this activity
- Tell us if there are indicator areas you would like us to add or revise

Regional polling -

assess community priorities on quality of life issues, i.e. what indicators are important to monitor according to constituents' view of their community?

- Town officials, COG representatives, general citizenry (random sample)

Putting Indicators to Use

- Illustration of trends
 - Comprehensive plans
 - Web-based GIS service for communities
- Ongoing work with communities on use of trend information and goal-setting

Thank you!



Tug Hill Commission
317 Washington St.
Watertown, NY 13601

1-888-785-2380
toll-free in region

www.tughill.org