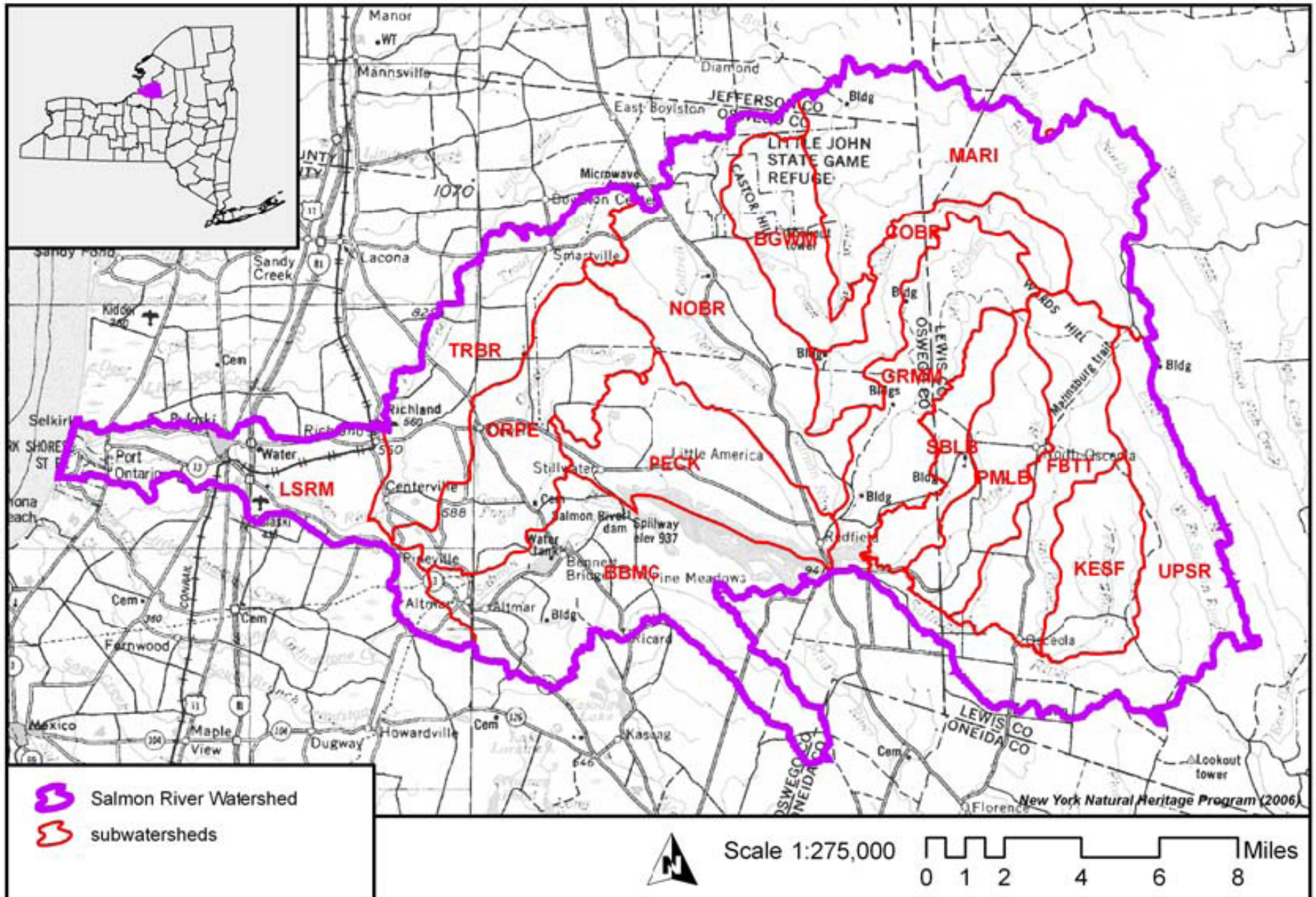
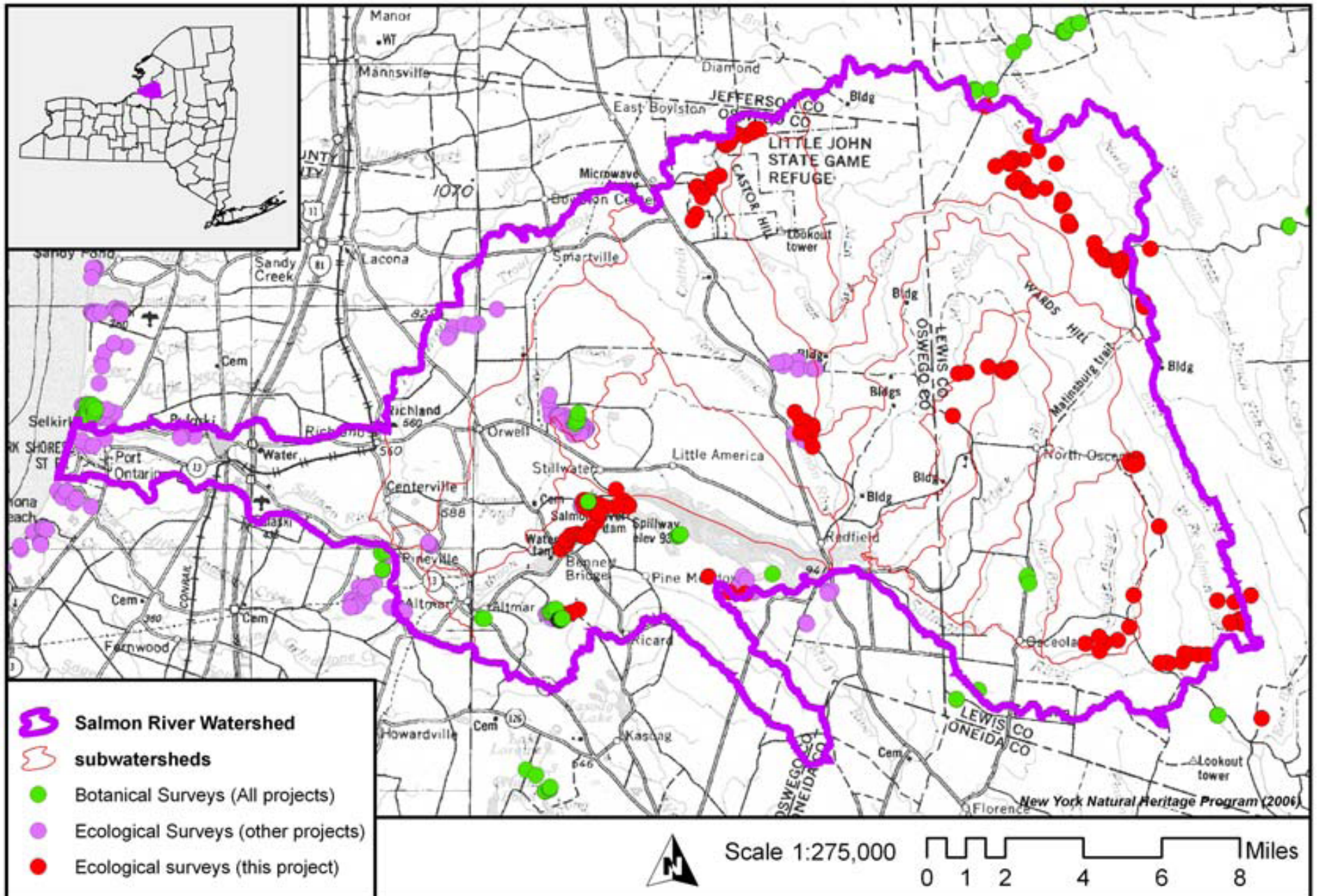


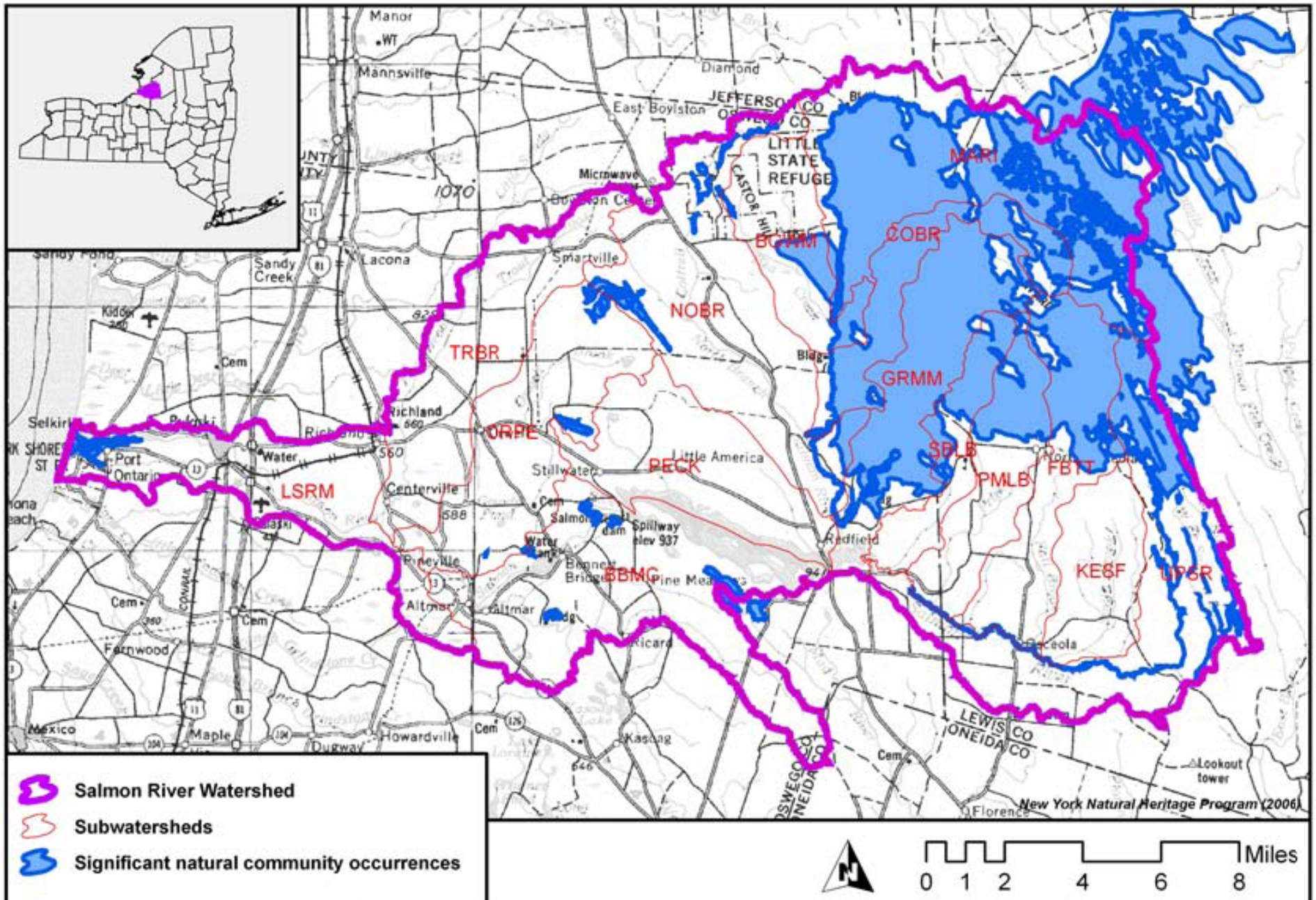
The 15 sub-watersheds created by NYNHP for use as analysis units for the Salmon River Watershed Natural Resources Assessment, 2006.



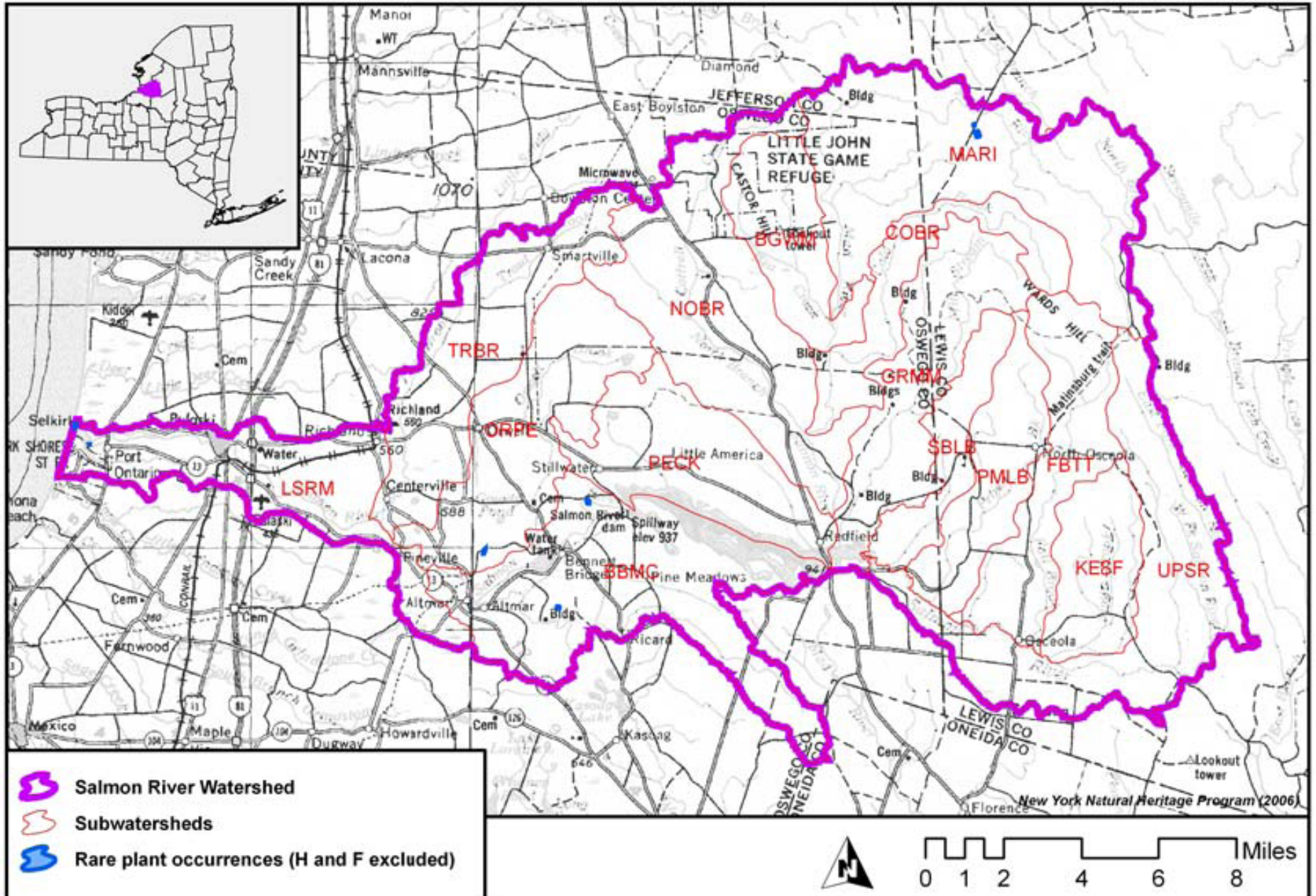
Ecological and Botanical Inventory locations within and nearby the Salmon River watershed. Ecological surveys conducted in the area but not funded by this project are identified in a different color. *NYNHP map from its Salmon River Watershed Inventory and Land Analysis report 2006.*



Significant natural community occurrences in the Salmon River Watershed, per NYNHP's 2006 Salmon River Watershed Inventory and Land Analysis report.



Rare plant occurrences in the Salmon River Watershed, per NYNYP's 2006 Salmon River Watershed Inventory and Land Analysis report. Historic records and those recently searched for, but not found, are not included on this map.



Rare animals in the Salmon River Watershed, per NYNYP's 2006 Salmon River Watershed Inventory and Land Analysis report.

