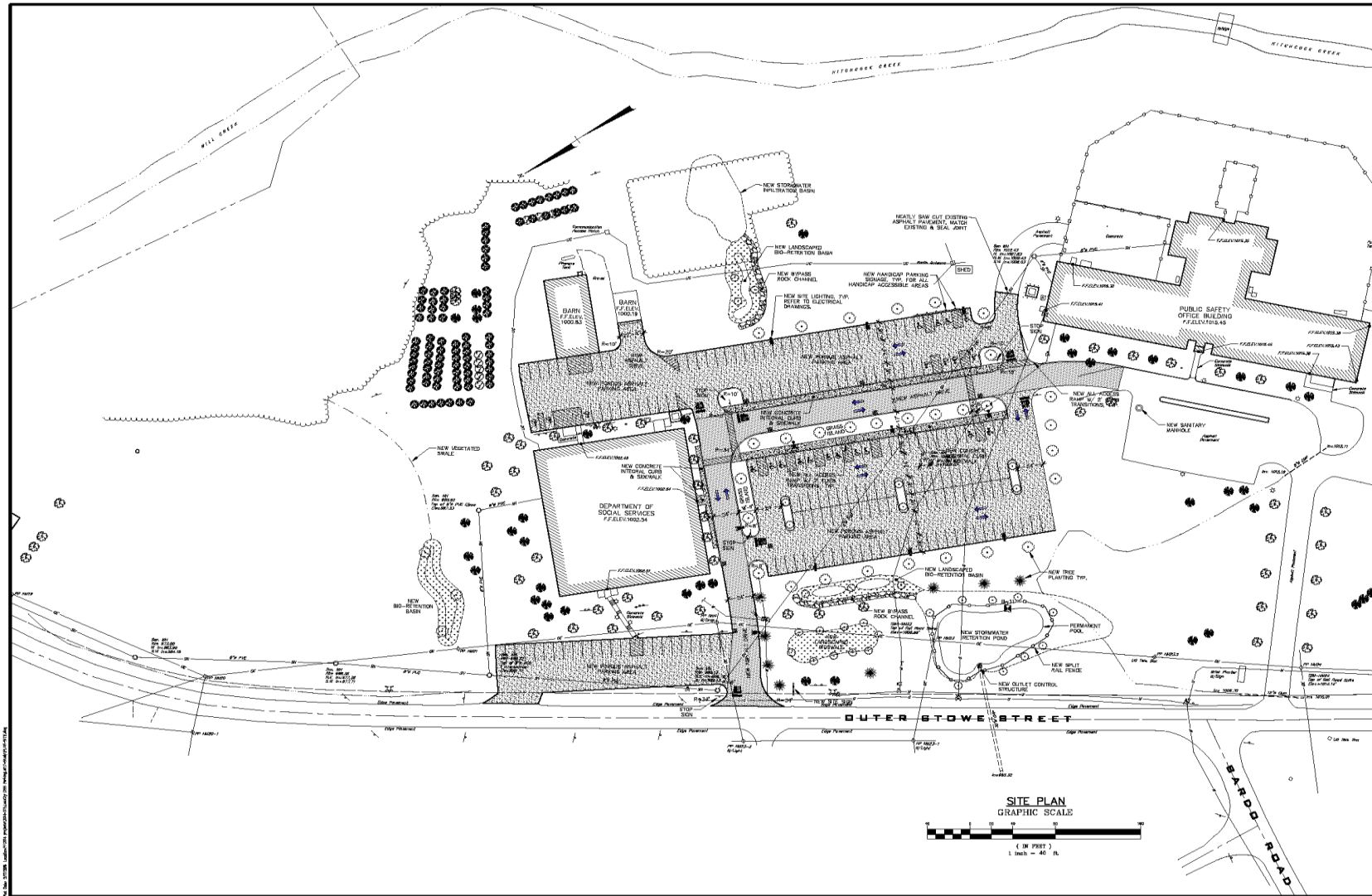


# LEWIS COUNTY

GREEN INFRASTRUCTURE GRANT PROGRAM



SITE PLAN  
GRAPHIC SCALE  
1 inch = 40 feet

**BERNIER, CARR & ASSOCIATES**  
Bernier, Carr & Associates, Engineers, Architects and Land Surveyors, P.C.  
100 WEST STREET, SUITE 200, LAWRENCEVILLE, GA 30046  
PH: 770-962-1100 FAX: 770-962-1101  
WWW.BCA-ENGINEERS.COM

**bc & g**

NOT FOR CONSTRUCTION

SITE PLAN  
LEWIS COUNTY GREEN INFRASTRUCTURE PROJECT  
5250 OUTER STOWE STREET  
Village of Lawrenceville - County of Lewis - State of New York

Scale:	1:3
Drawn by:	JAC
Checked by:	MAT
Date:	2/2/2018
Job No.:	2014-073
Sheet No.:	9-2

# PROJECT STATS

- ▶ Volume of water held in porous asphalt subsurface retention area:  
7,420 cubic feet (55,505 gallons)
- ▶ Volume of water treated annually by bioretention:  
1,700 cubic feet (12,717 gallons)
- ▶ Total cubic yardage of stone:  
3,500 cubic yards
- ▶ Total tonnage of porous asphalt:  
2212 tons
- ▶ Total square footage of porous asphalt:  
70,780 square feet

PROJECT COST \$950,000.00  
EFC-GIGP GRANT \$640,000.00  
Estimated Net Cost to County \$310,00.00























































THANK YOU