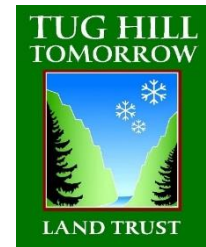


# Connecting Habitat in the Black River Valley and Beyond



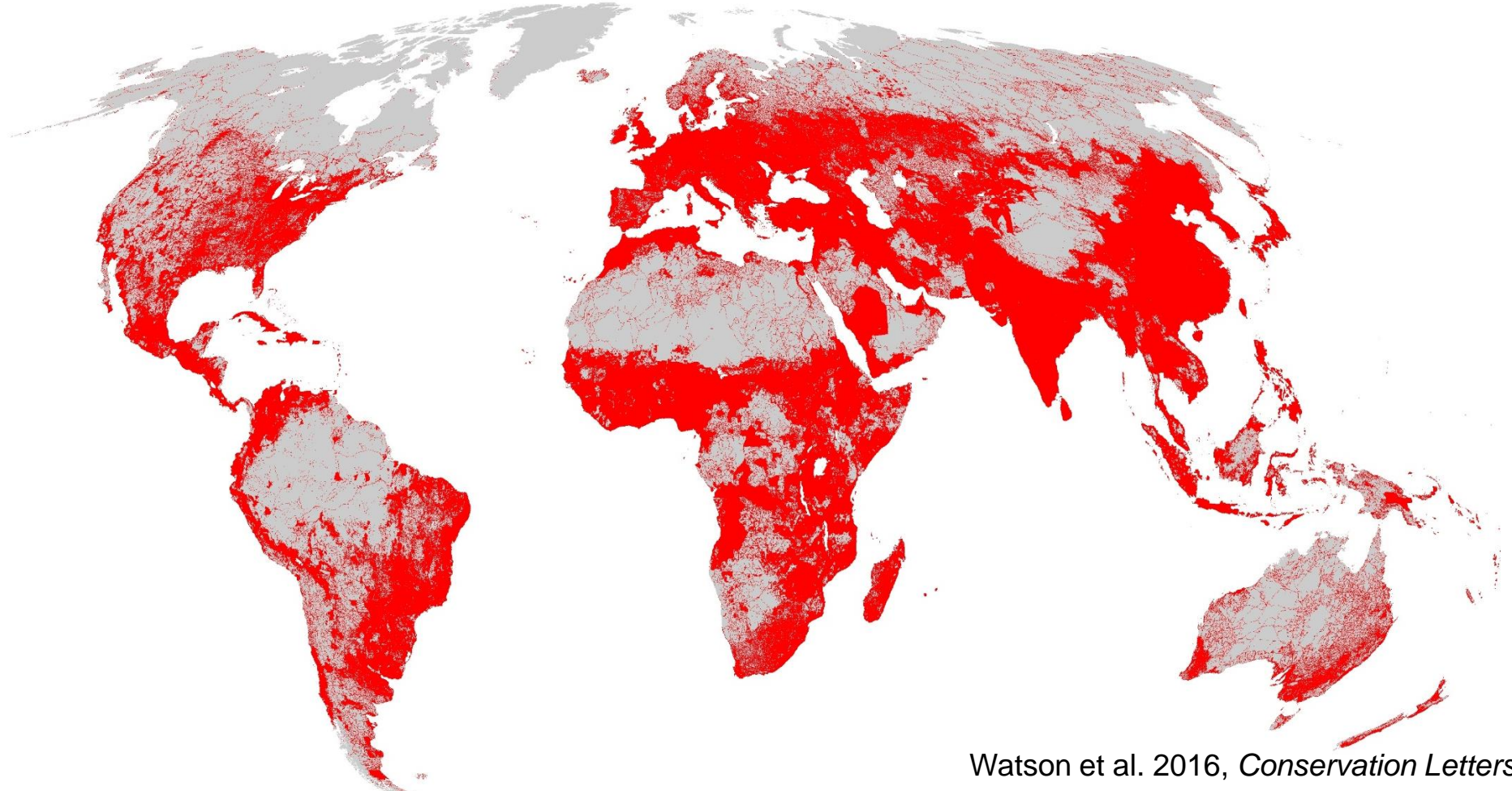
**Alissa Rafferty**



**Linda Garrett**

# Global Context

## Human Dominated Landscapes



Watson et al. 2016, *Conservation Letters*



# Landscape Connectivity

A call to action



## AREAS OF CONNECTIVITY CONSERVATION

STANDARDS FOR RECOGNISING AND REPORTING  
AREAS OF CONNECTIVITY CONSERVATION

DRAFT, January 2018

Connectivity Conservation Specialist Group



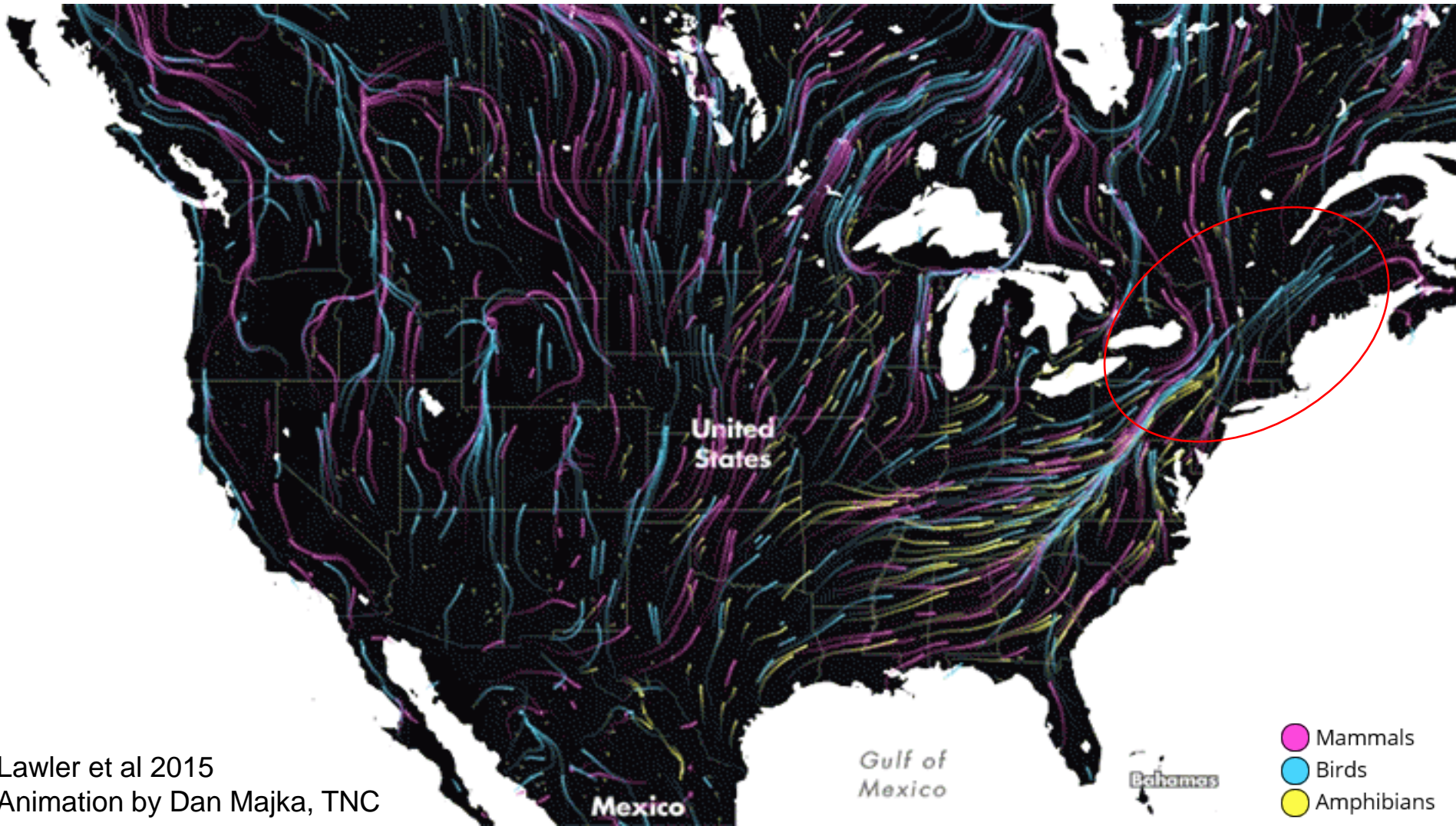
# Network for Landscape CONSERVATION



A landscape photograph showing a field of snow-covered grass in the foreground. In the background, there are rolling hills and a bright sunset with rays of light breaking through the clouds. The sky is filled with dark, dramatic clouds, and the sun is low on the horizon, creating a strong lens flare effect.

**22 years of science points to connectivity conservation as critical for protecting biodiversity in the face of climate change.**

# Connectivity and Climate



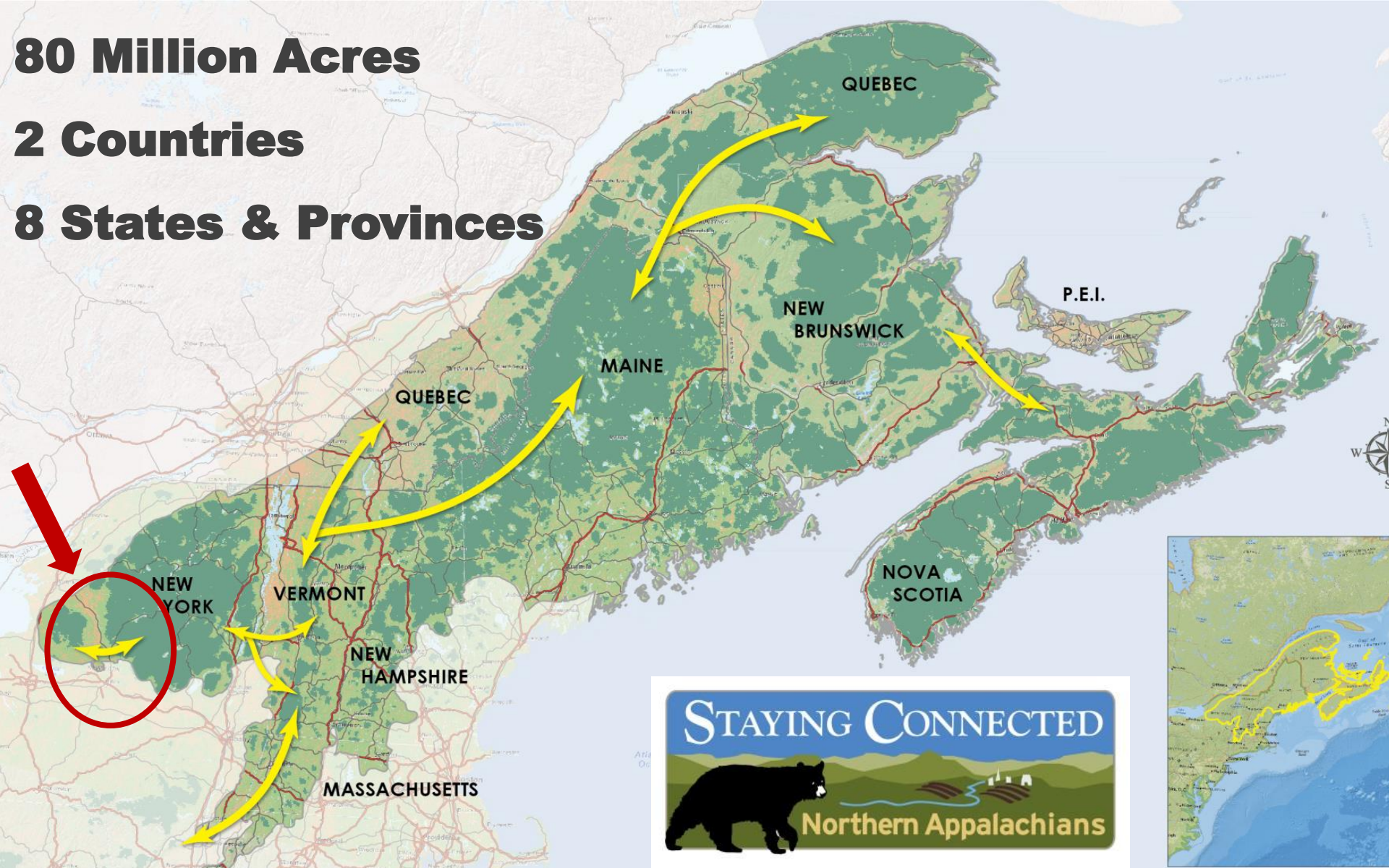
# Temperate Deciduous and Mixed Forests



# Northern Appalachian-Acadian Ecoregion



**80 Million Acres**  
**2 Countries**  
**8 States & Provinces**

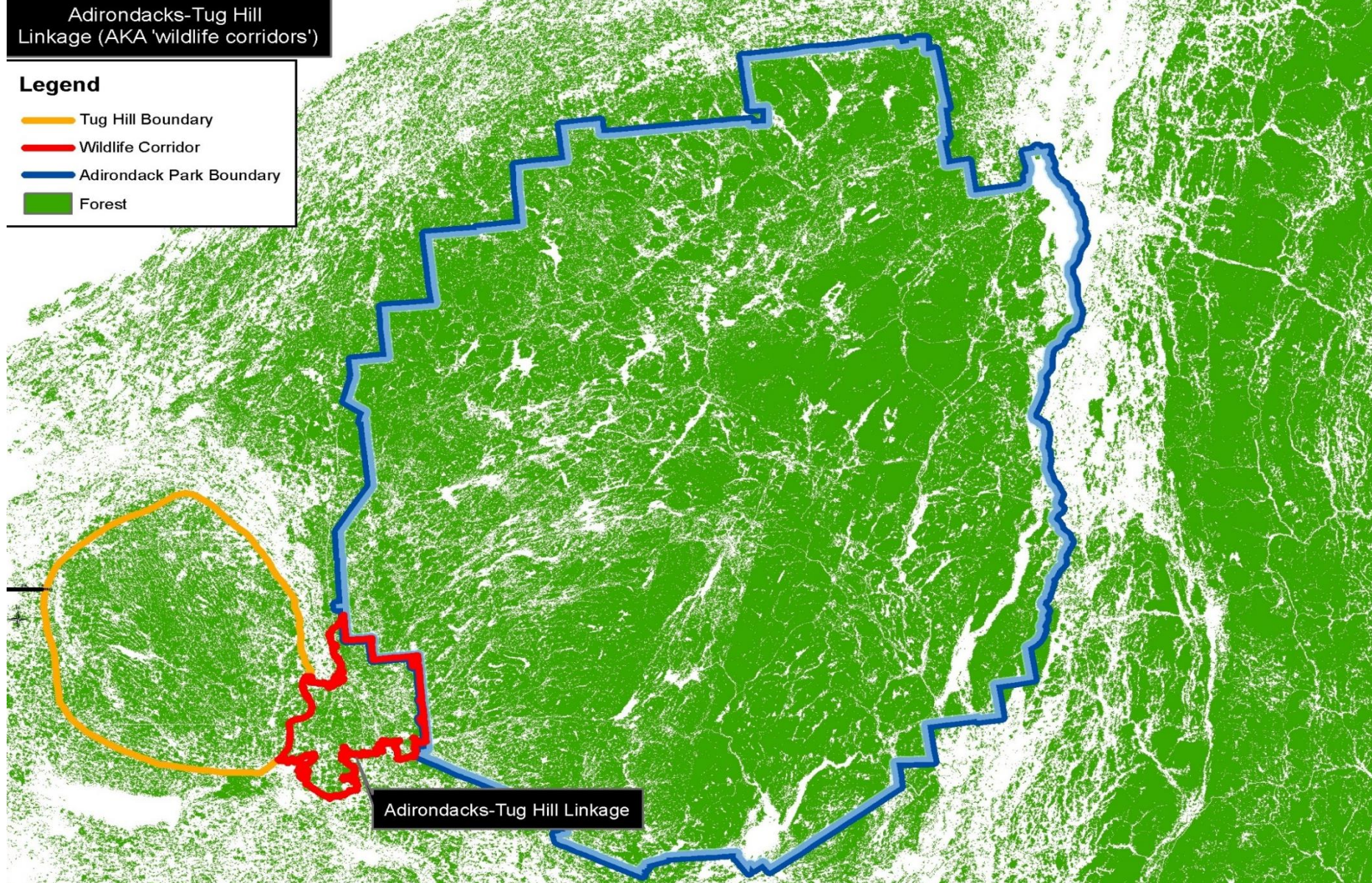




Adirondacks-Tug Hill  
Linkage (AKA 'wildlife corridors')

**Legend**

- Tug Hill Boundary
- Wildlife Corridor
- Adirondack Park Boundary
- Forest



Adirondacks-Tug Hill Linkage

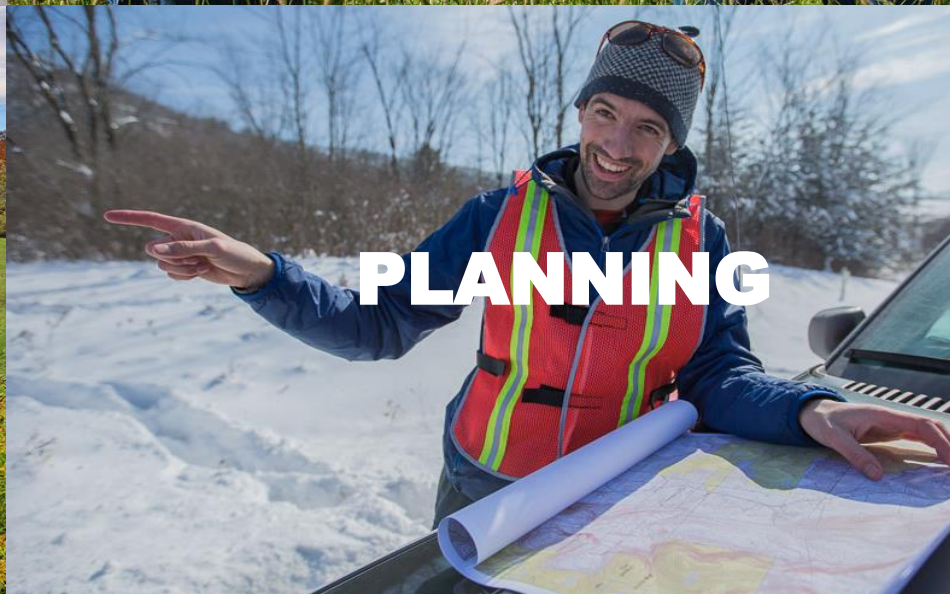


# Landscape Connectivity

**IN PARTNERSHIP**

**45+ members,  
public and private**





# Connecting the Landscape So Wildlife and People Can Thrive



# Guided by Science



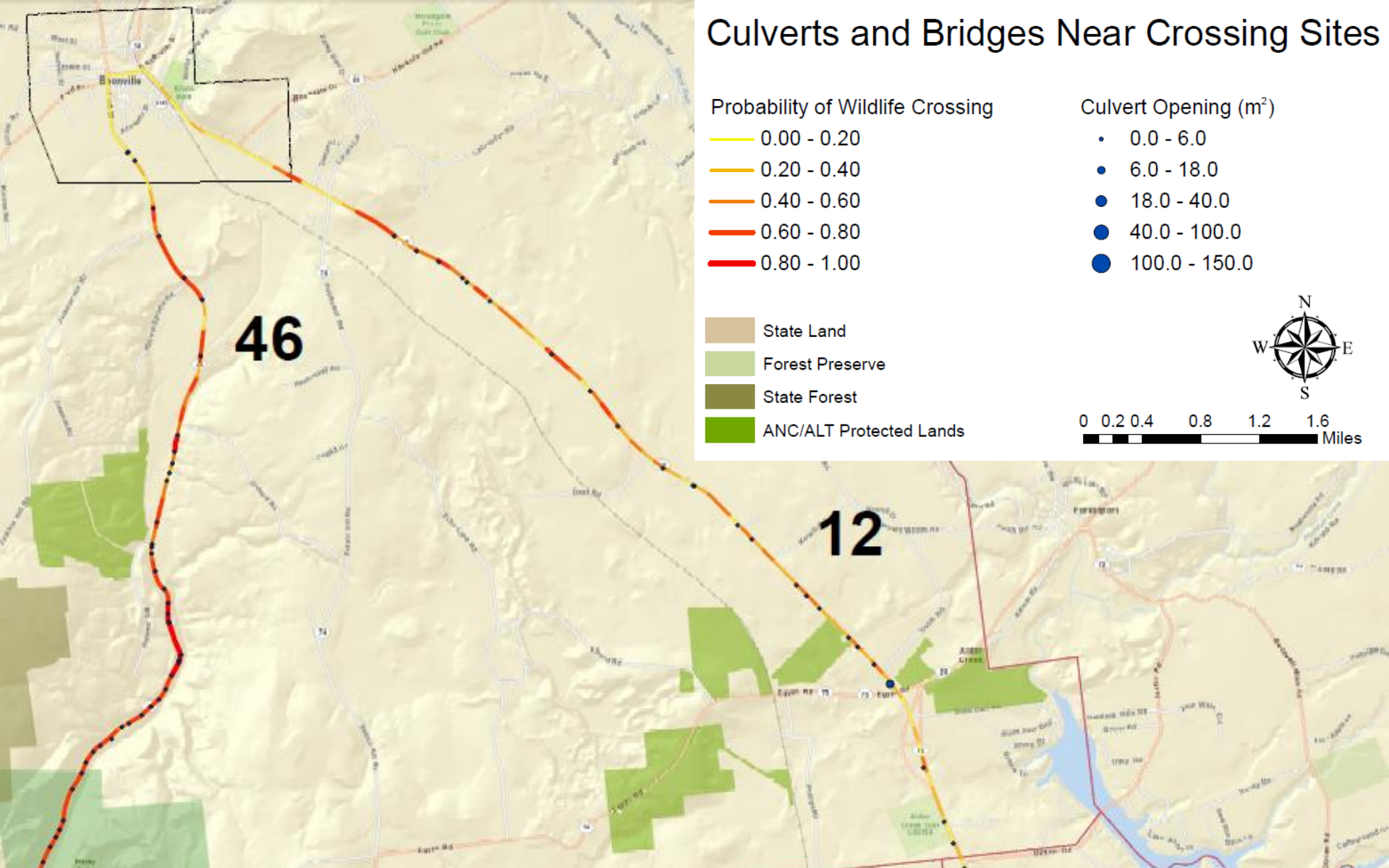


**Transportation**





# Culverts and Bridges Near Crossing Sites





Camera Name 30.36In→ 80°F ●

09-24-2014 16:19:32





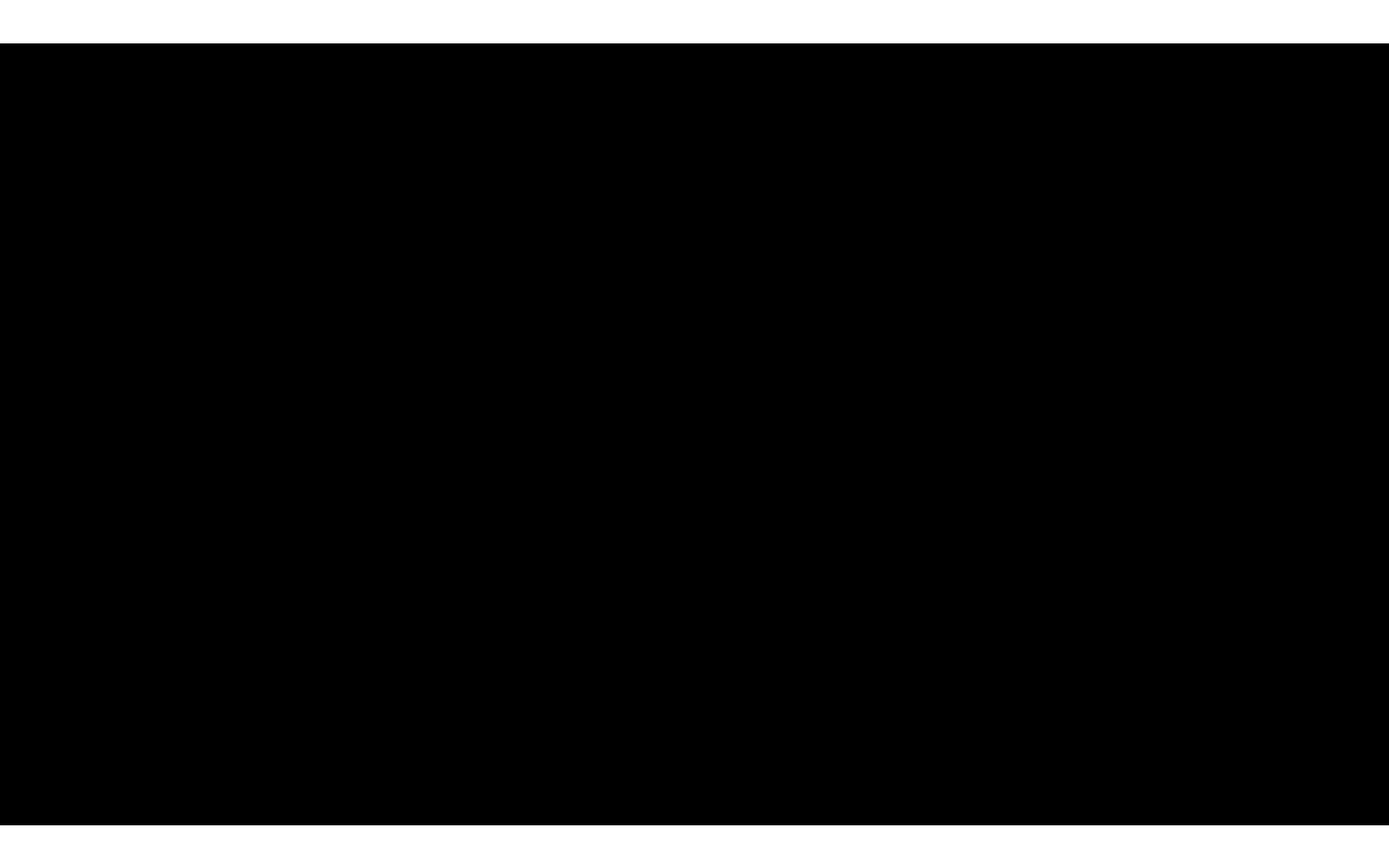












# LEVERAGING INVESTMENTS

Private lands protected by conservation easement held by local land trust

Culvert shelf installation by NYS DOT



Wildlife camera monitoring by The Nature Conservancy



Busy state road



# Connecting Fish Habitat



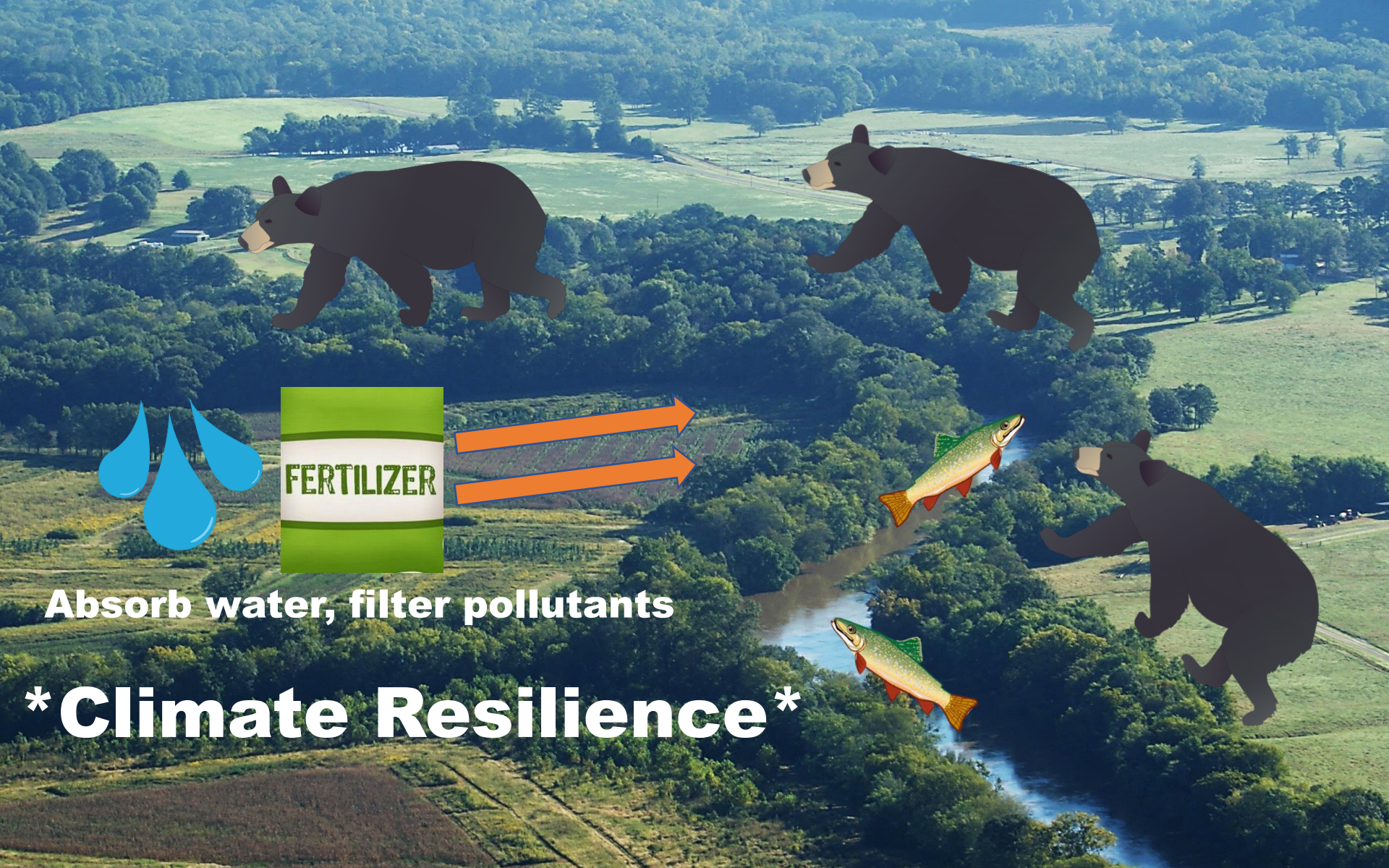
# Before



# After

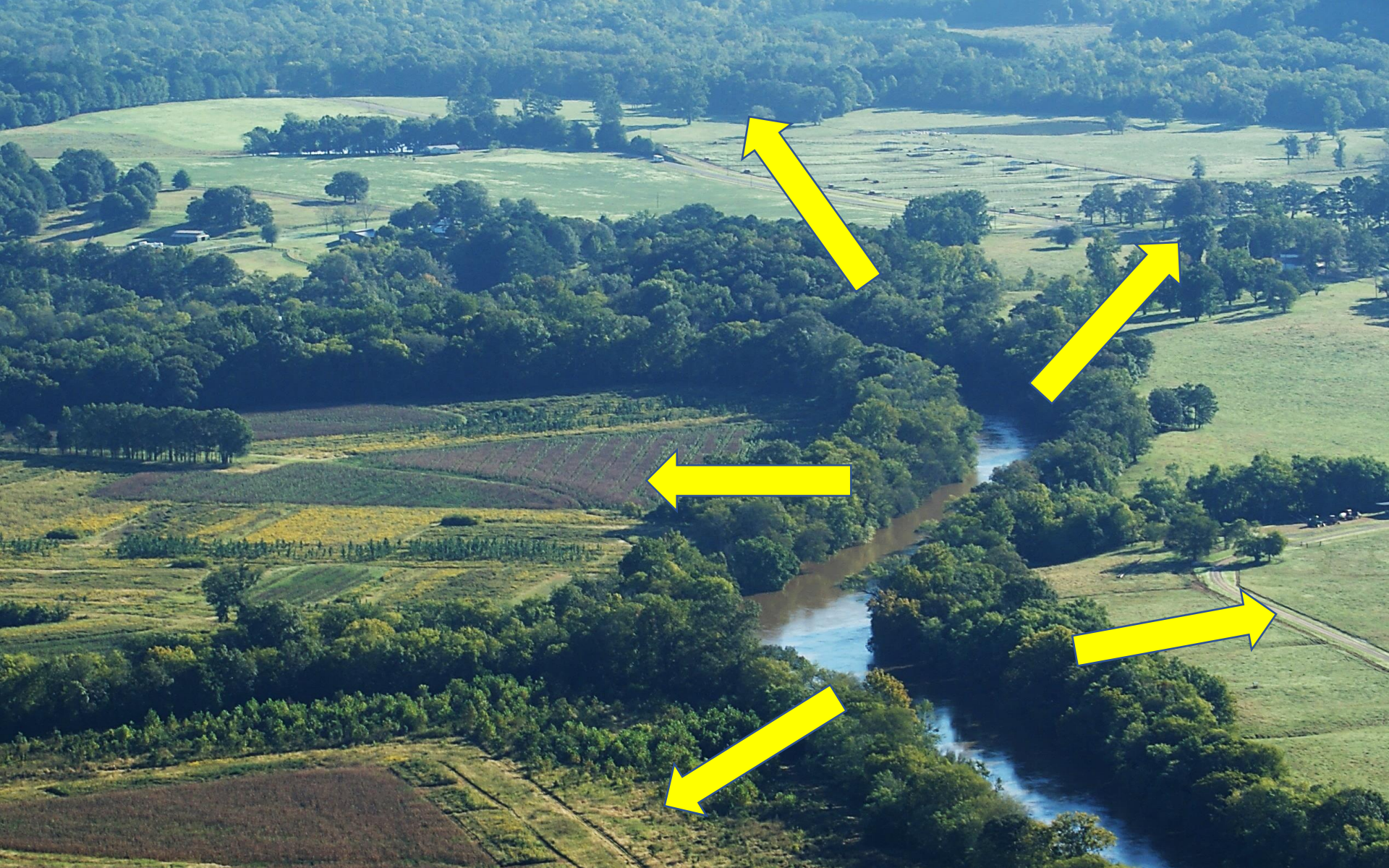






**Absorb water, filter pollutants**

**\*Climate Resilience\***





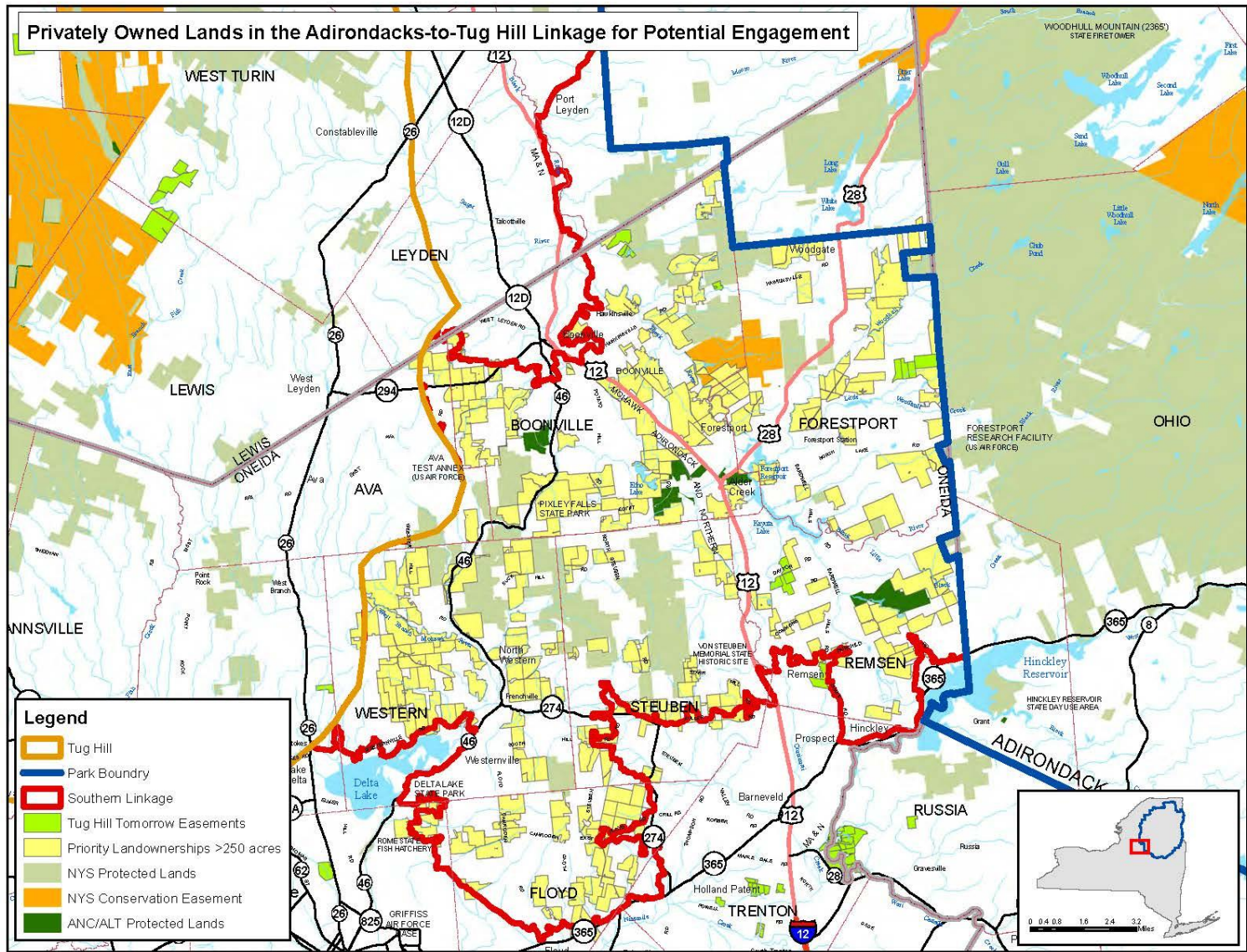
# Local Outreach



# Landowner Engagement

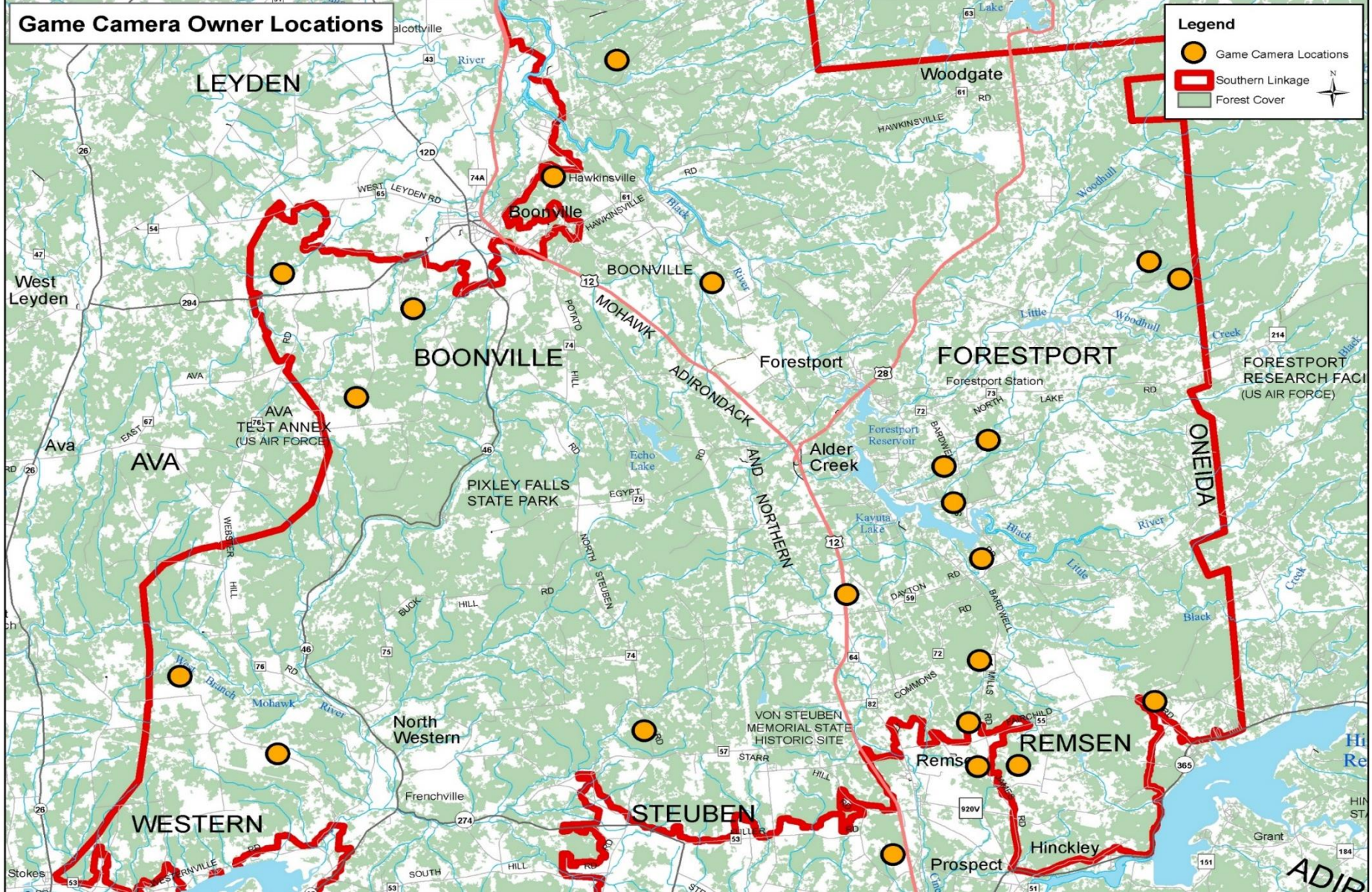


# Privately Owned Lands in the Adirondacks-to-Tug Hill Linkage for Potential Engagement





# Game Camera Owner Locations







*Mill*

**PFENDLER**

*Boonville  
Reservoir*

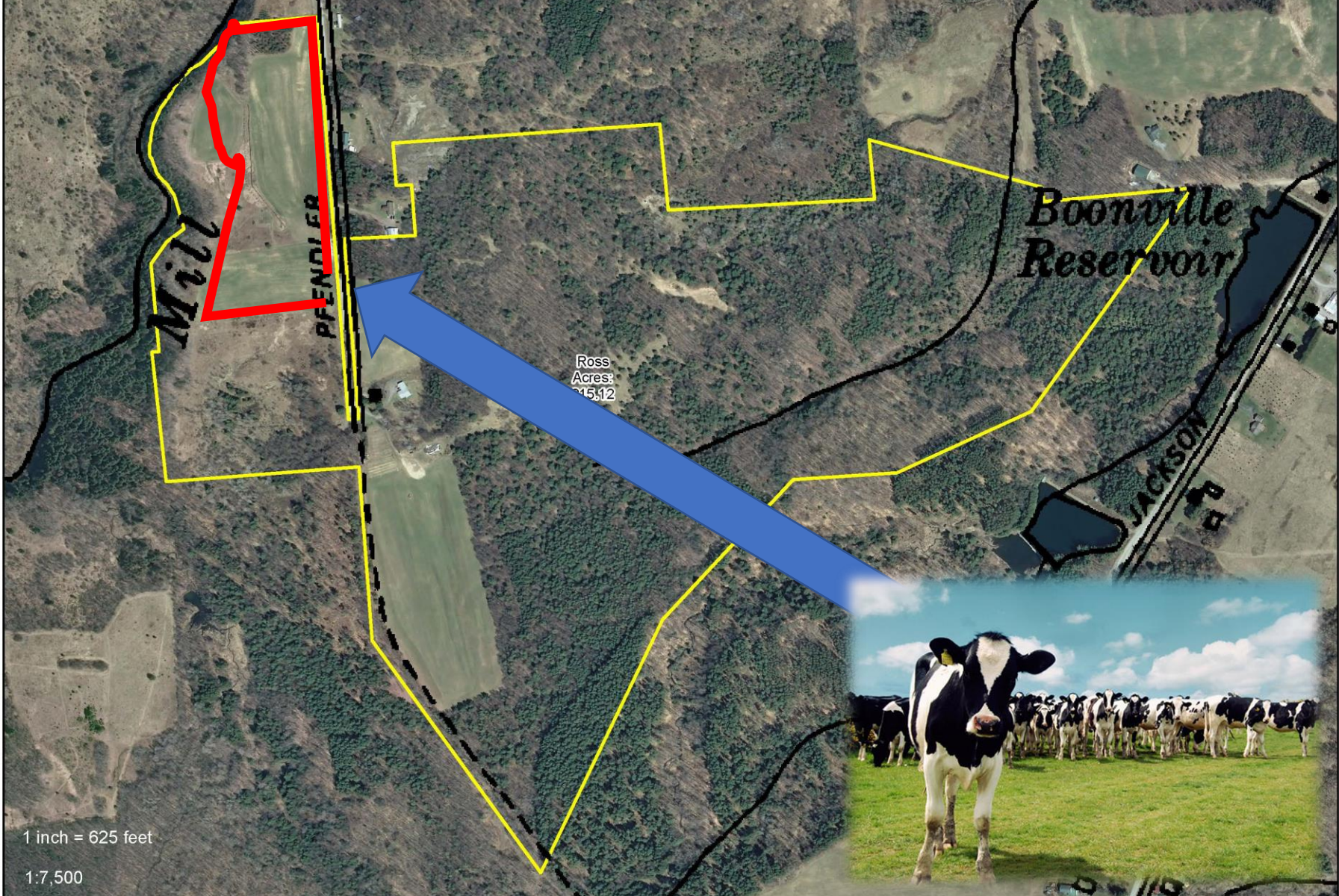
Ross  
Acres:  
215.12

**JACKSON**

**P.P.**

1 inch = 625 feet





Mill

PFENDLER

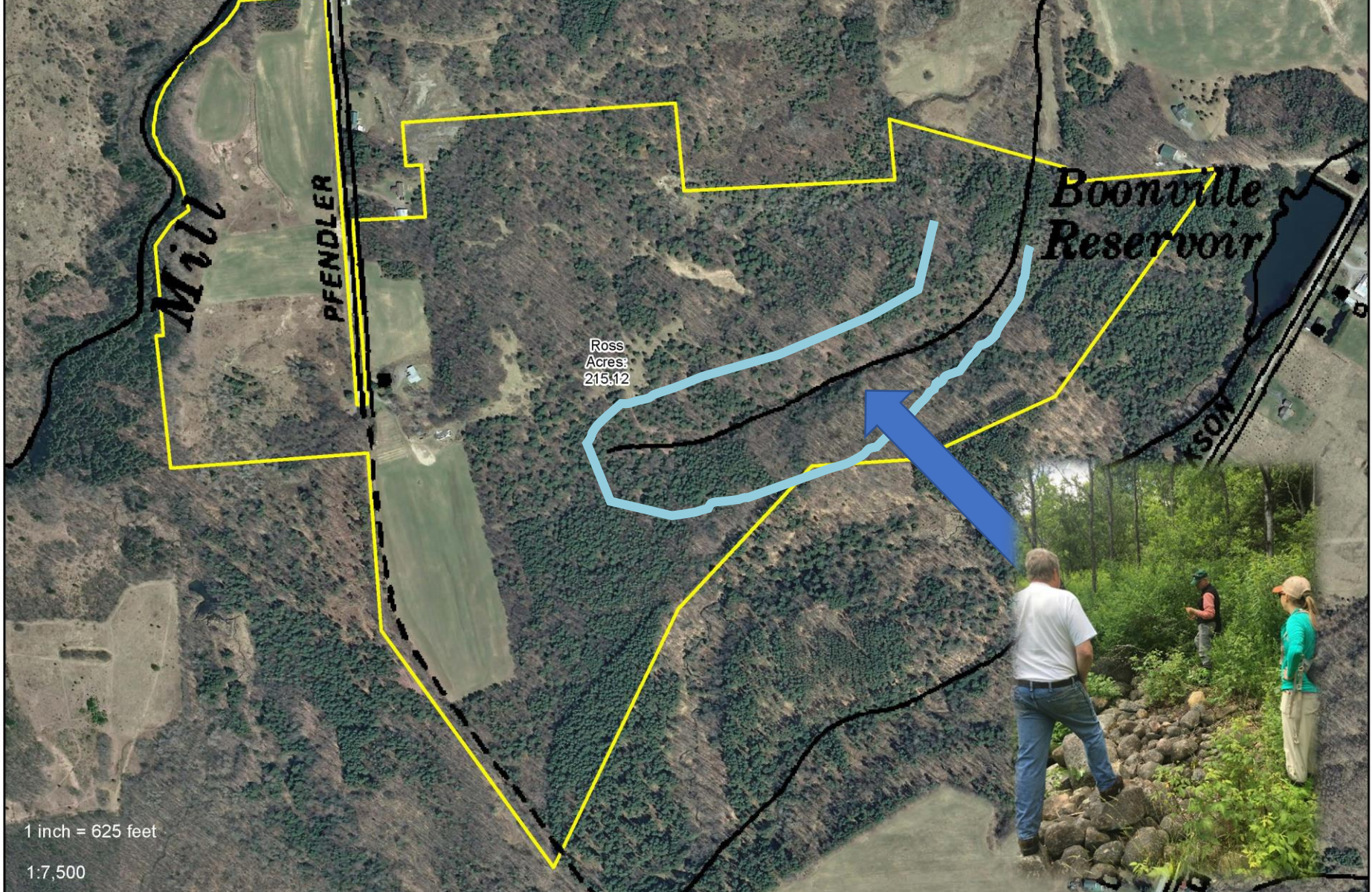
Boonville Reservoir

JACKSON

Ross Acres:  
15.12

1 inch = 625 feet  
1:7,500





Mill

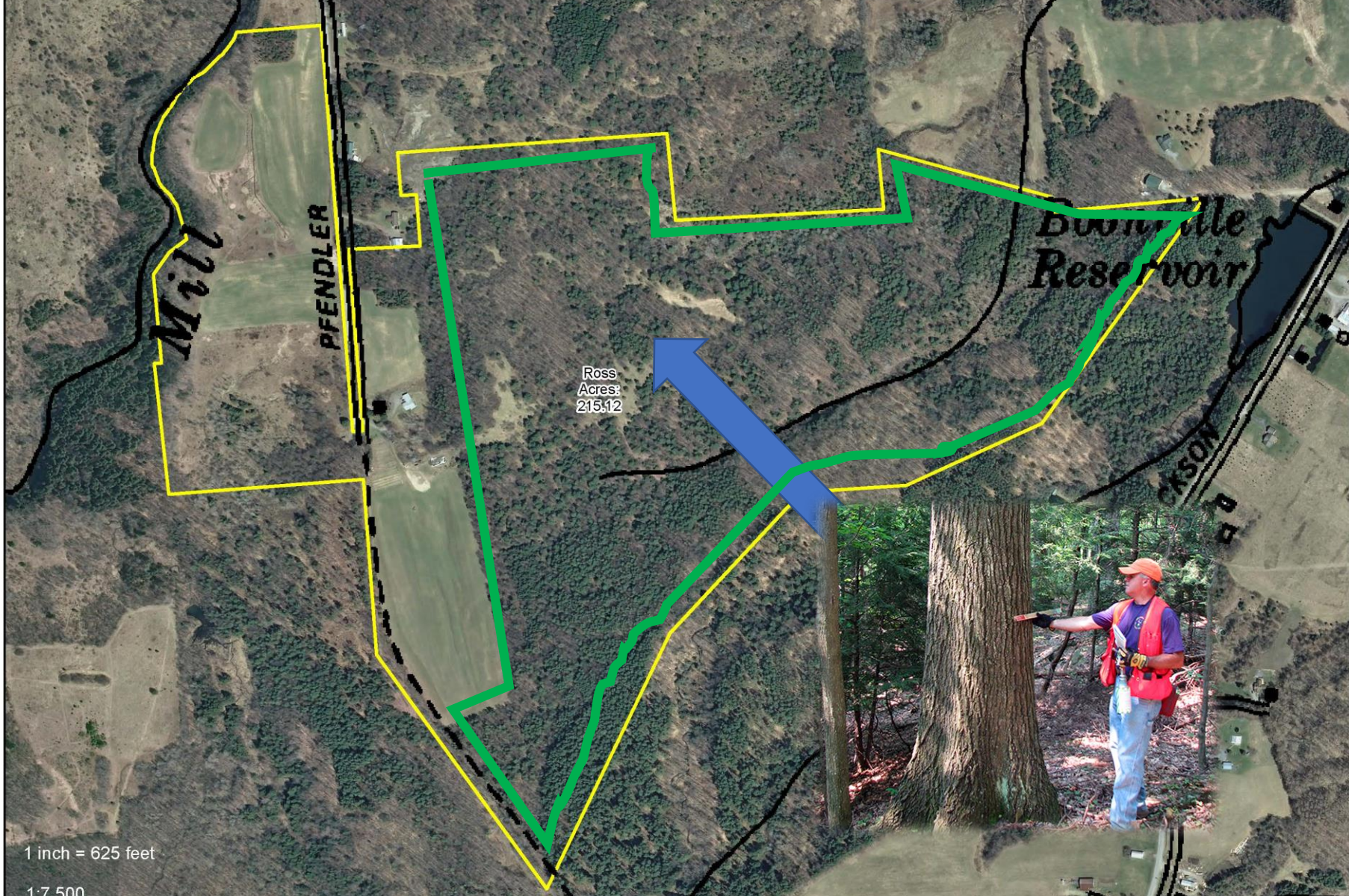
PFENDLER

Boonville Reservoir

Ross Acres:  
215.12

1 inch = 625 feet

1:7,500



Mill

PFENDLER

Boonville Reservoir

Ross Acres: 215.12

NOSEY  
P.P.

1 inch = 625 feet

1:7 500

*Mill*

**PFENDLER**

*Boonville Reservoir*

Ross  
Acres:  
215.12



1 inch = 625 feet

1:7,500



- 
- An aerial photograph of a river valley. The river flows from the top left towards the bottom center. The valley floor is a mix of green grass, brownish fields, and patches of forest. In the background, there are rolling hills and mountains covered in dense green forest. A small town or village is visible in the distance, nestled among the trees. Overlaid on the right side of the image is a list of three items in large white text.
- **Transportation**
  - **Land Use Planning**
  - **Land Protection**

# Thank You

The Nature  
Conservancy



STAYING CONNECTED



Northern Appalachians

TUG HILL  
TOMORROW



LAND TRUST